



# IFLA's

## Three Pillars & WSIS



# International Federation of Library Associations and Institutions

## Growing up in Southern Africa





# International Federation of Library Associations and Institutions

## Children's Library, Santiago, Chile







# International Federation of Library Associations and Institutions

State Library of Tasmania



University of Tasmania Library  
Australia





# IFLA's Three Pillars

*S  
o  
c  
i  
e  
t  
y*

- Libraries and information services serve society by preserving memory, feeding development, enabling education & research, and supporting international understanding & community well being.



# International Federation of Library Associations and Institutions

## Public Library, El Calafate, Argentina





# IFLA's Three Pillars

*s  
o  
c  
i  
e  
t  
y*

- IFLA works on the matters which affect library and information services globally, including:
  - intellectual property, privacy and other legal issues
  - censorship, other barriers to access to information & freedom of expression & ethical concerns
  - protection of heritage and library services in times of conflict
  - the major international issues relating to the information society



# IFLA's Three Pillars

s  
o  
c  
i  
e  
t  
y

IFLA's special programs  
directed towards societal  
matters:

- *FAIFE* - Committee on Free Access to Information and Freedom of Expression
- *CLM* - Committee on Copyright and other Legal Matters





# International Federation of Library Associations and Institutions

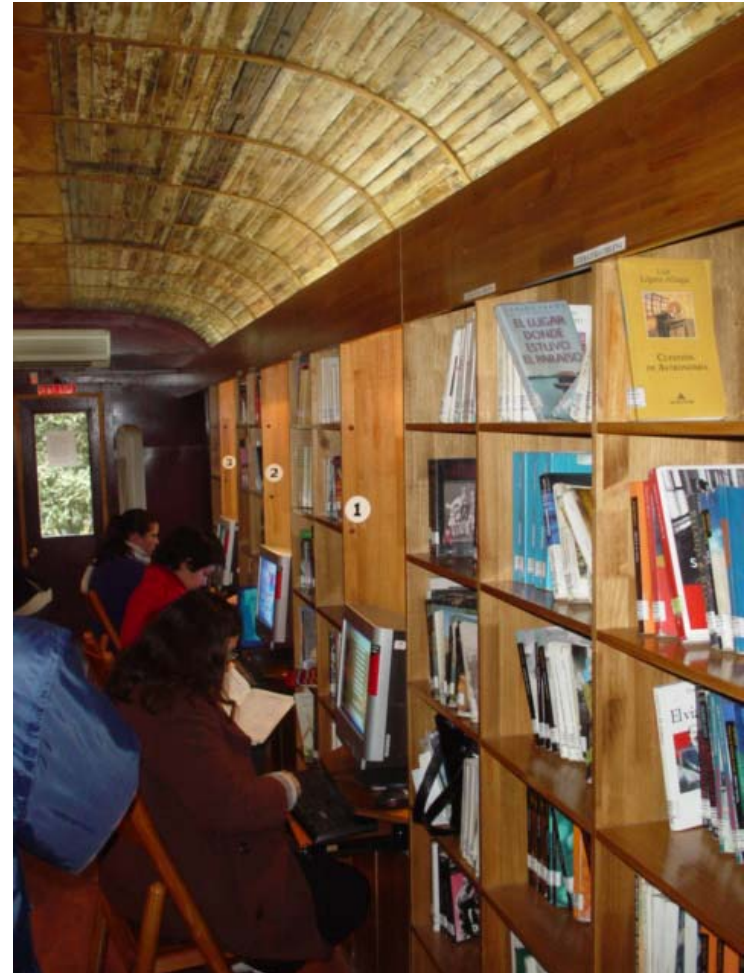
University Library, University of the North,  
Limpopo Province, South Africa





# International Federation of Library Associations and Institutions

## Train Library, National Library, Santiago, Chile





# IFLA's Three Pillars

IFLA works with partners to address shared priorities:

S  
o  
c  
i  
e  
t  
y

- *WSIS* - engagement with the World Summit on the Information Society & other international arenas
- *Blue Shield* - partnership with International Council of Museums, International Council on Monuments & Sites and International Council on Archives
- Other important partners include Unesco, the International Publishers' Association and the telecentres movement





# International Federation of Library Associations and Institutions

## University Library, University of Botswana







# International Federation of Library Associations and Institutions

## Suzhou Library, China





# IFLA's Three Pillars

*p  
r  
o  
f  
e  
s  
s  
i  
o  
n*

- As the global voice for libraries & information services and the profession, IFLA has always been vitally concerned with improving methods, technical means and standards



# International Federation of Library Associations and Institutions

## Shanghai Library, China





# IFLA's Three Pillars

*p  
r  
o  
f  
e  
s  
s  
i  
o  
n*

- Professional activities are coordinated by the Professional Committee. They include:
  - 48 sections grouped into 8 divisions
  - special focal programs dealing with improvement of library services for development, formulation & elaboration of standards, preservation & conservation





# International Federation of Library Associations and Institutions

## Zhejiang Provincial Library, Hanzhou, China





# IFLA's Three Pillars

*p  
r  
o  
f  
e  
s  
s  
i  
o  
n*

- IFLA' special programs directed towards professional concerns:
  - **ALP** - Action for Development through Libraries program
  - **ICABS** - IFLA-CDNL Alliance for Bibliographic Standards
  - **PAC** - Preservation and Conservation
  - **UNIMARC**



# International Federation of Library Associations and Institutions

## Conservation, Hangzhou, China





# International Federation of Library Associations and Institutions

## Jiaye Library, China







# IFLA's Three Pillars

*m  
e  
m  
b  
e  
r  
s*

- IFLA's central pillar is its membership which it supports through a range of services, including:
  - the annual World Library & Information Congress
  - specialist and regional conferences
  - IFLA Journal, books and other publications



# International Federation of Library Associations and Institutions

## Library, Estrellas, Chile, Antartica





# IFLA's Three Pillars

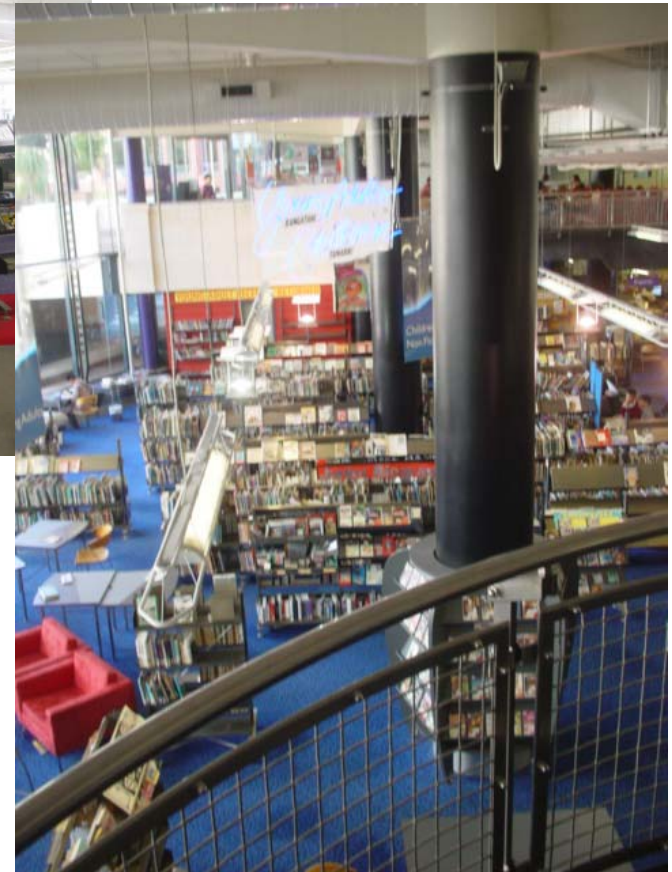
m  
e  
m  
b  
e  
r  
s

- IFLA's membership offers global reach:
  - 1700 members from 150 countries including national, international & specialist library associations, libraries and information services, corporate partners and individuals
  - IFLA's members contribute time & resources to achieve IFLA's goals to improve libraries & information practice & to serve global society



# International Federation of Library Associations and Institutions

## Wellington Public Library New Zealand







# IFLA's Three Pillars

*s  
o  
c  
i  
e  
t  
y*

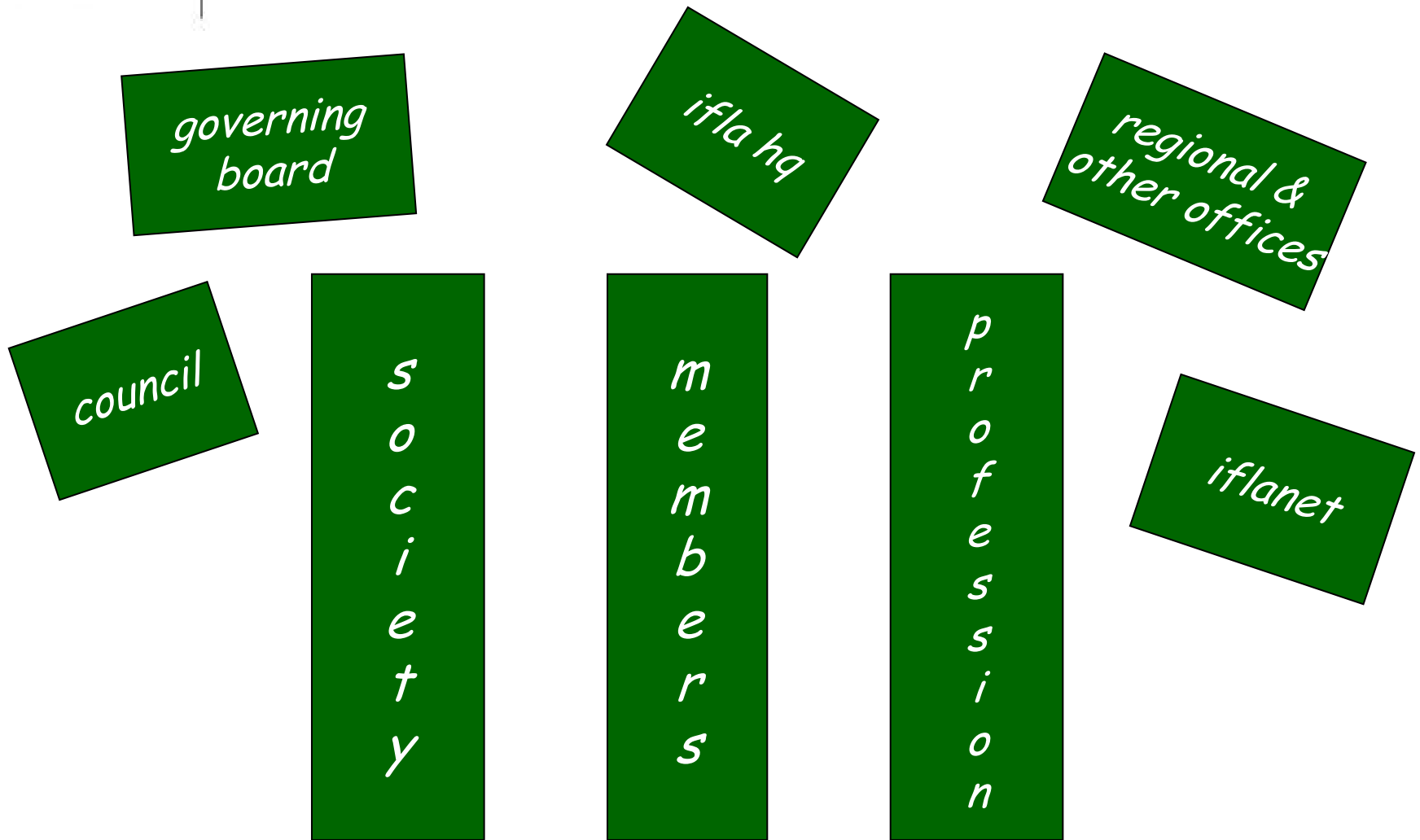
*m  
e  
m  
b  
e  
r  
s*

*p  
r  
o  
f  
e  
s  
s  
i  
o  
n*

*Globally interdependent, active and engaged*



# International Federation of Library Associations and Institutions



*Governance, staff and IFLANET are the key enablers*



# International Federation of Library Associations

Institutions

I	F	L	A	
<i>s</i> <i>o</i> <i>c</i> <i>i</i> <i>e</i> <i>t</i> <i>y</i>		<i>m</i> <i>e</i> <i>m</i> <i>b</i> <i>e</i> <i>r</i> <i>s</i>		<i>p</i> <i>r</i> <i>o</i> <i>f</i> <i>e</i> <i>s</i> <i>s</i> <i>i</i> <i>o</i> <i>n</i>



# International Federation of Library Associations and Institutions

IFLA Council, World Library & Information Congress 2004,  
Buenos Aires







## World Summit on the Information Society

- IFLA's engagement with WSIS helped emphasise the needs of society
- The Declaration of Principles and Plan of Action recognised the importance of libraries and information services and the key issues of concern to the sector



# International Federation of Library Associations and Institutions

Libraries@the Heart, IFLA Pre-Conference  
for the World Summit on the Information Society





## WSIS

The 11 key principles “for building an inclusive Information Society” in the WSIS Declaration of Principles, Geneva, 2003 include:

2. Information and communication infrastructure: an essential foundation for an inclusive information society
3. Access to information and knowledge



# International Federation of Library Associations and Institutions

## Bibliored Internet Access, Santiago, Chile







## WSIS

8. Cultural diversity and identity, linguistic diversity and local content
9. Media
10. Ethical dimensions of the Information Society
11. International and regional cooperation



# International Federation of Library Associations and Institutions

## Biblio Metro, Santiago, Chile





*IFLA*

*Working for libraries  
and information  
services globally*



# International Federation of Library Associations

Institutions

I	F	L	A	
<i>s</i> <i>o</i> <i>c</i> <i>i</i> <i>e</i> <i>t</i> <i>y</i>		<i>m</i> <i>e</i> <i>m</i> <i>b</i> <i>e</i> <i>r</i> <i>s</i>		<i>p</i> <i>r</i> <i>o</i> <i>f</i> <i>e</i> <i>s</i> <i>s</i> <i>i</i> <i>o</i> <i>n</i>