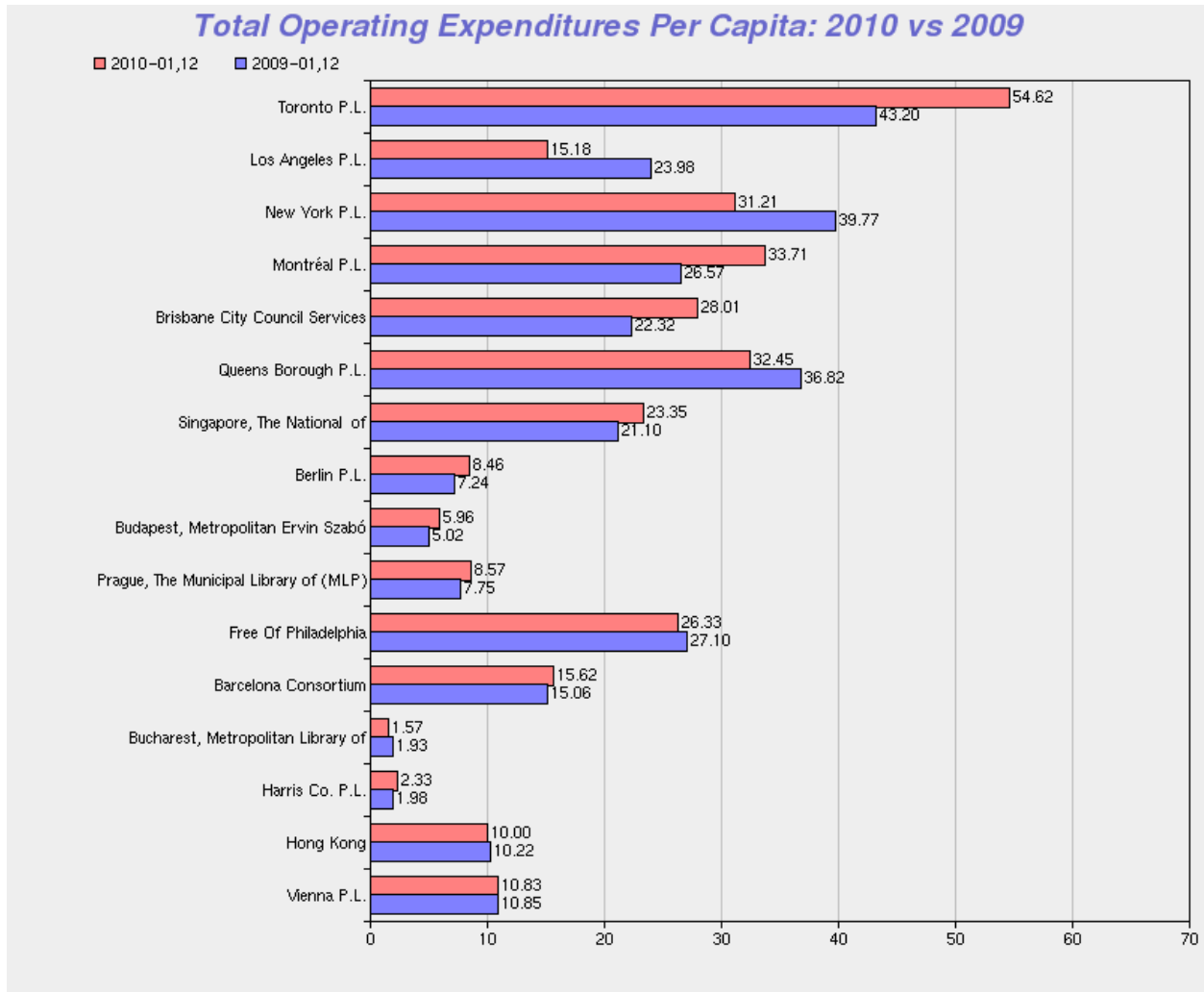




2010 IFLA Year-to-year Comparison

Expenditures per Capita (libraries serving population 1,000,000 and over)

Collection: **IFLA MLS** Period **2010**

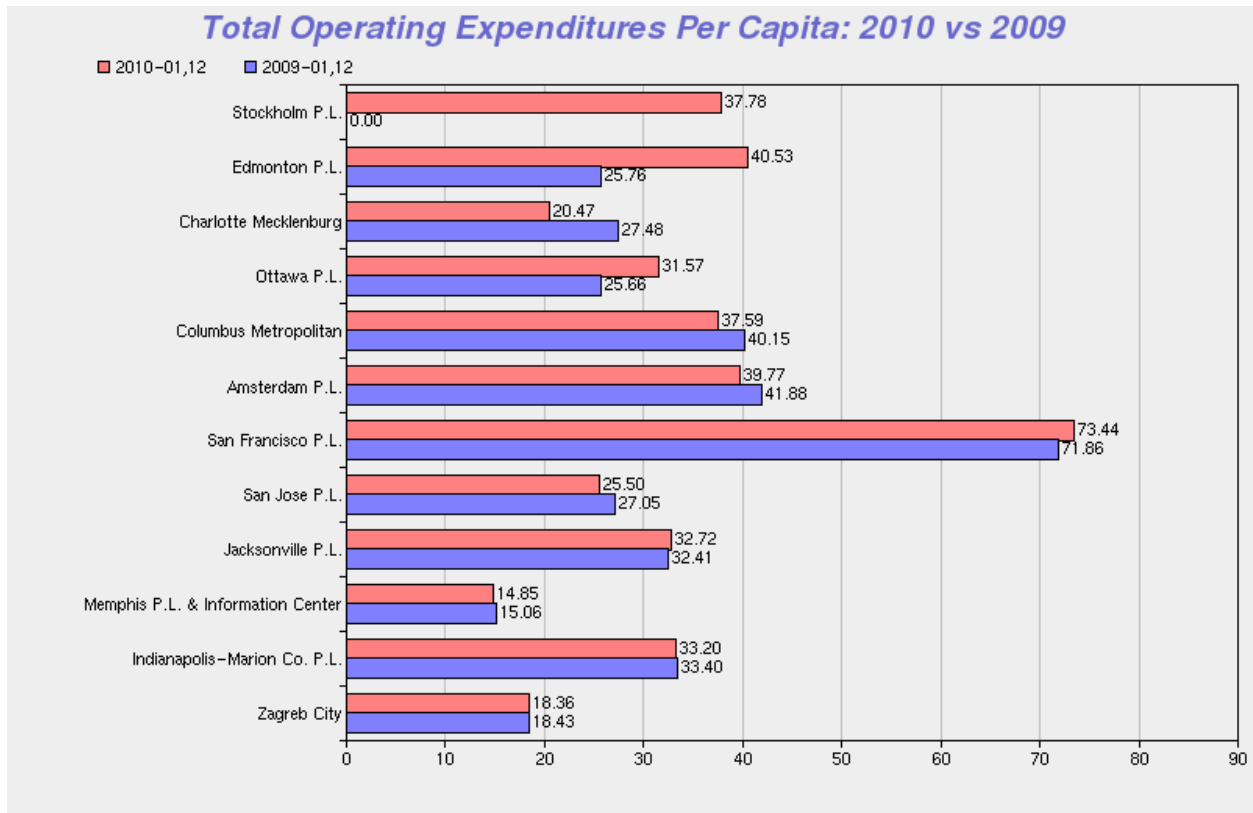




2010 IFLA Year-to-year Comparison

Expenditures per Capita (libraries serving population 999,999-750,000)

Collection: **IFLA MLS** Period **2010**



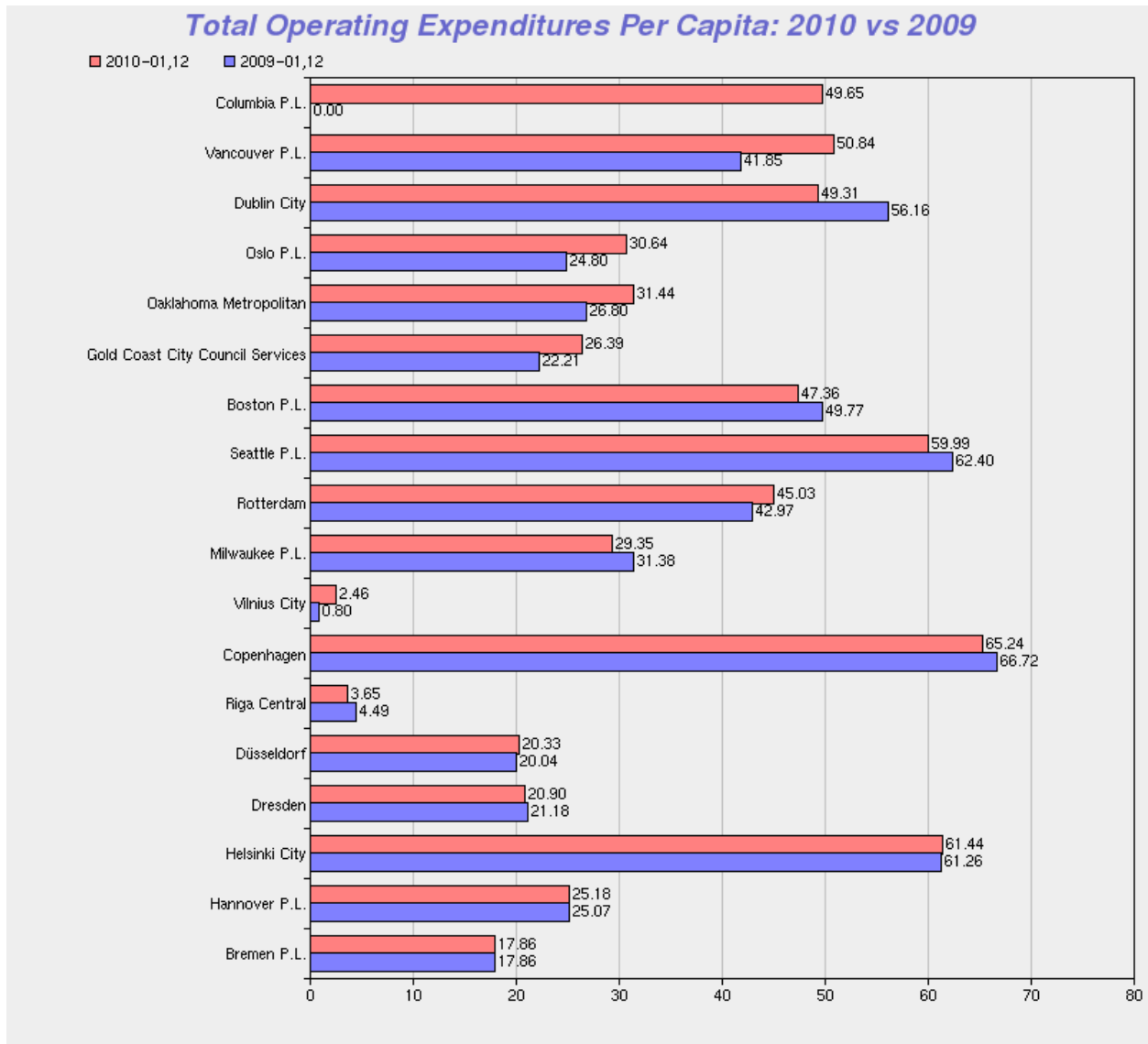
**No data is available for libraries that didn't participate in the 2009 survey or provide data.



2010 IFLA Year-to-year Comparison

Expenditures per Capita (libraries serving population 749,000-500,000)

Collection: **IFLA MLS** Period **2010**



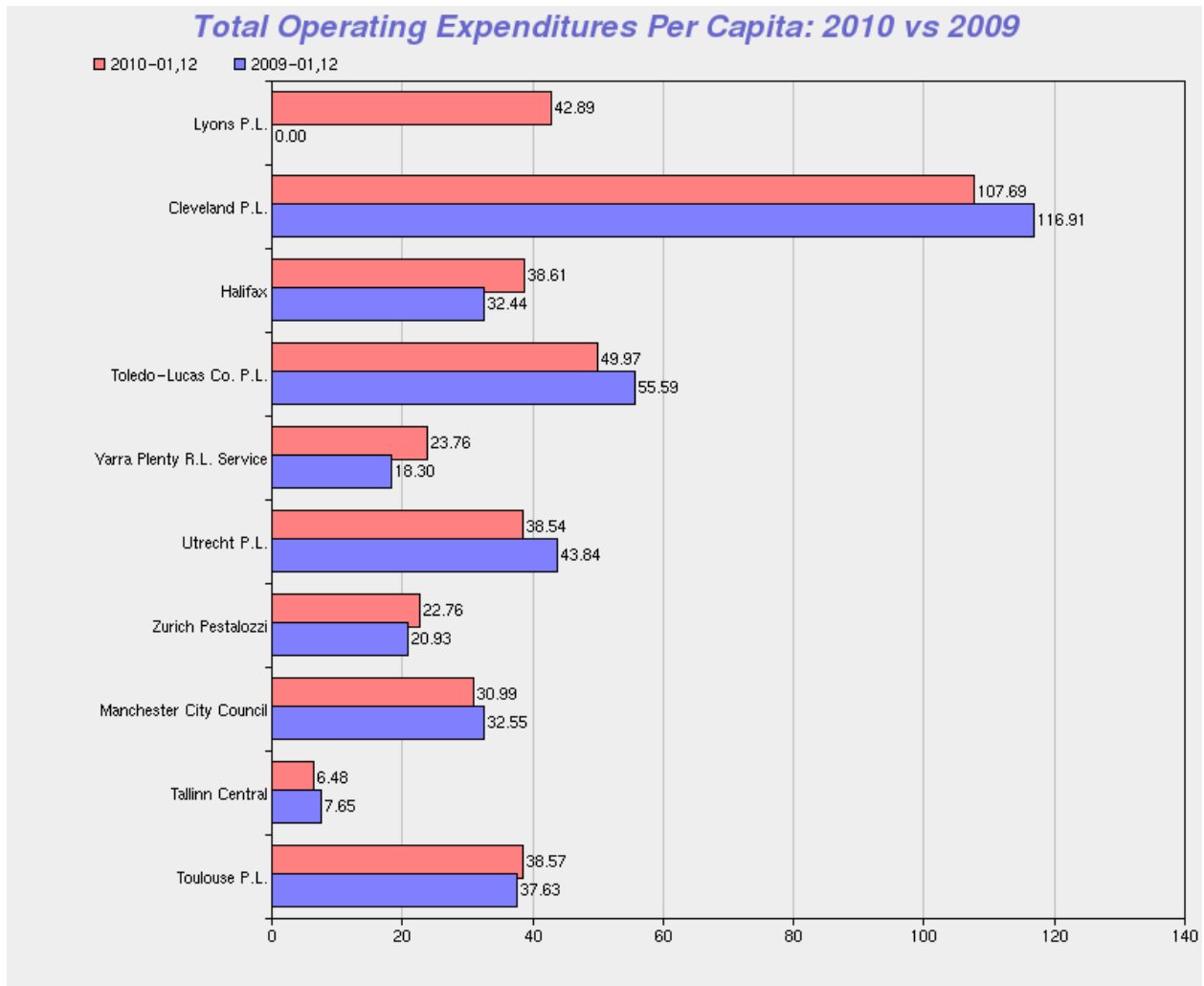
**No data is available for libraries that didn't participate in the 2009 survey or provide data.



2010 IFLA Year-to-year Comparison

Expenditures per Capita (libraries serving population under 500,000)

Collection: **IFLA MLS** Period **2010**



**No data is available for libraries that didn't participate in the 2009 survey or provide data.